

MOMENTUM

Speckle Park & Angus Bull & Female Sale



SUNDAY, APRIL 2, 2023 AT 1:00 PM
CHAMPÊTRE COUNTY • ST. DENIS, SK


COLGAN'S
CATTLE COMPANY

RAVENWORTH
CATTLE


PICK-IT LIVESTOCK

Catch the MOMENTUM!

Amazingly another year has passed and here we go for the third annual Momentum Speckle Park and Angus bull and female sale. Once again our group of consignors are very please with the exciting offering of bulls, females and frozen genetics.

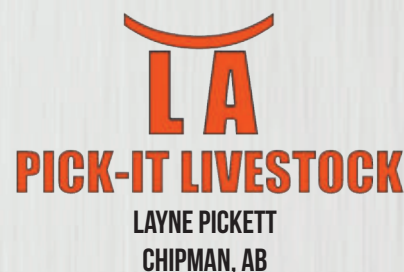
We as breeders truly appreciate your business and would like to extend an enormous thank you to all of the buyers, bidders and supporters of our past sales. Our success is measured by the successes of our customers and we genuinely recognize that creating a strong working relationship is key to everyones success in the cattle industry.

Once again we are extremely pleased to be hosting the sale at the "Howling Coyote Saloon," Champetre County, St. Denis, SK. This amazing venue offers a fantastic old west experience, we personally invite you to join us. We will have all of the cattle on display sale day for your viewing and evaluation. You will also find videos of the sale lots on dlms.ca and buyagro.com. Further information and updates about the sale can also be found on our Facebook pages.

We invite you to contact any of the sale partners for more information on any of the consignments to the sale, we would be pleased to answer any questions you may have or offer assistance with selecting genetics to work with your programs. We looking forward to working with you. On farm bull pen tours available ahead of time just contact us.



GARRY AND DONNA BERTING
MIDDLE LAKE, SK



From the Desk at T Bar

Welcome to Momentum III Speckle Park/Angus Bull and Female Sale on Sunday, April 2, 2023, hosted at the "Howling Coyote Saloon," Champetre County, St. Denis, Saskatchewan. This event, now in its third year, offers outstanding opportunities to acquire championship seedstock in two major breeds.

The Angus portion of the sale is contributed by Ravenworth Cattle. Their champion pen of bulls at Lloydminster Cattlemen's Call will be features in the sale. The Ravenworth A.I. program offer sons of the out-cross performance sire, "Sitz Alpine," who is no longer available in Canada. In addition are embryo sons of "Sitz Stellar" and a very stout and consistent group of calving ease sons by their walking bull "Lift Off." The Ravenworth Angus herd has been built and developed using the basics of performance, high maternal values and relative calving ease.

Colgan's Cattle Company joins Ravenworth Cattle in the Speckle Park section along with a flush from Pick-It Livestock. Their offering is truly outstanding as these two sale partners are also competitors in the show ring... as breeders, their cow herds are predictable in both body type, production, and appeal. As the Speckle Park matured, the cream has risen to the top as Ravenworth won the world with Colgan's a very close second!

Colgan's feature the first progeny of "Greenwood Headliner," a bull that is breeding like the champion he is. These sons have awesome muscle shape, body mass, hair, and calving ease. The "Gladiator" sons offer style and appeal with plenty of hair, thickness, while maintaining moderate birth weights. The females are paternal sisters to the great lineup of bulls. Selected from the replacement pasture, they are destined to make front pasture brood matrons, maybe even donors. The Colgan embryos offered give everyone an opportunity to select from their elite donor program.

Garry and Donna have established world records in 2022! Canadian National Champion Female, multi show winner and now declared "Miss World!" But I think that this event should be dedicated to "Invictus," one of the best breeding sires in the breed. His daughters are outstanding in production and body type whether it be in the pasture or the show ring. The bulls who were campaigned last fall are definite features along with the first sons by "Hi-Tyde." Uniformity, optimal in frame, lots of hair, muscle shape and low birth weight sum up this powerful lineup.

No doubt the flush in "Miss World" is a once in a lifetime opportunity but let us not overlook the other flushes, embryos, and semen. Valuable tools for the exciting years to follow... tools that will add value to your breeding operation.

Stop by any of the farms and preview the sale offering and have a peek at the mothers or feel free to give these progressive breeders a call to discuss the cattle and those that will fit your breeding requirements.

If we may be of assistance prior to, or sale day, feel free to contact any of the T Bar Team or myself, we will help you in a professional manner.

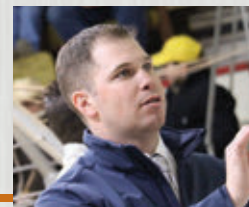
Chris Poley



CHRIS POLEY: 306-220-5006



SHANE MICHELSON: 403-363-9973



BEN WRIGHT: 519-374-3335

MOMENTUM

Speckle Park & Angus Bull & Female Sale

SUNDAY, APRIL 2, 2023
AT 1:00 PM

CHAMPÊTRE COUNTY • ST. DENIS, SK

— *please join us for lunch at noon* —

SALE DAY PHONES

Chris Poley, Auctioneer
Shane Michelson, Ringside
Ben Wright, Ringside
Levi Rimki

Cell: 306-220-5006
Cell: 403-363-9973
Cell: 519-374-3335
Cell: 204-851-4515

Consignors:

Colgan's Cattle Company:

Tony Freimark
Tammy Freimark

Cell: 306-830-8239
Cell: 306-830-8787

Ravenworth Cattle:

Garry Berting
Donna Berting
Grayson Berting
Ryker Berting
Huxley Berting

Cell: 306-231-7567
Cell: 306-231-5175
Cell: 306-231-6468
Cell: 306-231-9480
Cell: 306-231-8331

Pick-It Livestock:

Layne Pickett

Cell: 587-989-7995

SALE MANAGEMENT



T Bar C Cattle Co. Ltd.

Box 2330 Warman, SK S0K 4S0
info@tbarc.com
Office: 306-933-4200
Fax: 306-934-0744
www.tbarc.com

INSURANCE

Larry Toner

Cell: 306-834-7652

SCHEDULE

SATURDAY APRIL 1, 2023 4PM - 8PM

CATTLE ON SITE FOR VIEWING & CHILLI SOCIAL

SUNDAY, APRIL 2, 2023

10AM - CATTLE VIEWING

NOON - LUNCH AT THE SALOON

1 PM SALE TIME

SALE LOCATION



Champêtre County

St. Denis, SK Phone: 306-258-4635
Located 35 km East of Saskatoon on
Highway #5, turn North at Highway
671 towards St. Denis. Travel 6.5 km
North and 0.8 km West.

ACCOMMODATIONS

Champêtre County

St. Denis, SK

Phone: 306-258-4635

VIDEOS

View Videos on

www.buyagro.com or www.dlms.ca

ONLINE BIDDING

Watch and bid online with DLMS

Internet Bidding Available

DLMS

www.dlms.ca

For more information call DLMS:

Mark Shologan 780.699.5082 or

DLMS Purebred Team 780.991.3025

Speckle Park Coat Colour Legend

ED/ED	Homozygous Black
ED/e	Red Carrier

Speckle Park Polled Legend

P/P	Homozygous Polled
P/H	Heterozygous Polled

VIEW THE CATALOGUE ONLINE AT WWW.BUYAGRO.COM

ANGUS - YEARLING BULLS

RAVENWORTH
CATTLE

GARRY AND DONNA BERTING
BOX 134

MIDDLE LAKE, SK S0K 2X0

GARRY: 306-231-7567

DONNA: 306-231-5175

GARRY@RAVENWORTH.COM

WWW.RAVENWORTH.COM



For our 2023 Angus bull offering we are pleased with the consistency and performance in these bulls, from our AI sired bulls to the selection from our walking herd sire. We were very pleased to be selected Champion Pen of 2 Bulls at the Lloydminster Cattlemen's Call with both of them available at the sale. These bulls have been developed on a ration with longevity in mind. There is a great offering of Angus bulls here that will add pounds to your calf crop this fall and style to any heifers you retain for your program. These bulls are backed by our established maternal cow herd that has been developed over the past 18 years with careful retention of what we feel to be the top females from our replacement heifers each year. We are very proud of the selection of yearling bulls we have to offer and we welcome inquires you may have, or assistance in your selection for your breeding program. On farm tours available just give us a call. See you sale day!

Ravenworth Cattle Angus



Lot **1** **RAVENWORTH Alpine 38K**

2259256

Male

11-Feb-22

RAVE 38K

KM BROKEN BOW 002
SITZ ALPINE 11076
SITZ ELLUNAS ELITE 1874

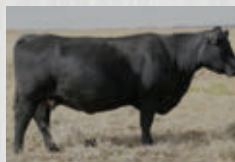
SUMMITCREST COMPLETE 1P55
SUMMITCREST PRINCESS 0P12
MOGCK BULLSEYE
SITZ ELLUNAS ELITE 4011

R A F WIDE WORLD 920
ROYAL S PRIDE DOLLY 3B
ROYAL PRIDE DOLLY 46P

R A F WIDELOAD 500
R A F ESTERMERE 532
INNIWAY ROYCE 203 018
ROYAL PRIDE DOLLY 29E

BW	ADJ 205D	ADJ 365D	EPDS	BW	WW	YW	MCE	MILK
91	816	1297		1.8	57	102	6	27

Here is a chance to acquire some unique genetics. Alpine is currently not available in Canada and 38K's dam is a RAF Wide World daughter that has so much power and performance. We have used two of her sons in our herd and love what the daughters are doing with great udders. 38K will leave a legacy of females that possess maternal traits along with power and phenotype. He was in our winter show string and garnered a lot of attention as he is long, fancy and extremely well balanced, with a big hip and wide top.
Twin



DAM: ROYAL S PRIDE DOLLY 3B



SIRE: SITZ ALPINE 11076

ANGUS - YEARLING BULLS



2023 CHAMPION PEN OF BULLS - LLOYD



Here is a stout made bull that we selected for our winter show string with a powerful build, great lines, full top line and herd bull head, this bull checks the boxes nicely. He is off of our walking sire Wilbar Lift Off 869H. Partnered with RAVE 28K bull they were Champion Pen of two bulls at the Lloydminster Cattlemen's Call 2023.

Consigned by: Ryker Bering



Lot 2 RAVENWORTH **Hi Definition** 4K

2259451 Male 01-Jan-22 RYKB 4K

FF COUNTDOWN D9
WILBAR LIFT OFF 869H
WILBAR JENNIFER 151D

JPM WOODROW 3D
JPM STYLISH LADY 467H
JPM STYLISH LADY 16C

CONNEALY COUNTDOWN
FF FANTASY B38
PM AVIATOR 19'14
WILBAR JENNIFER 614B

S A V RESOURCE 1441
W C C PRIMROSE S414
DBRL TITAN 29X
GEIS STYLISH LADY 68'05

BW	ADJ 205D	ADJ 365D	EPDS	BW	WW	YW	MCE	MILK
95	696	1208		2.8	44	84	8	26

Lot 3 RAVENWORTH 869H **Lift Off** 28K

2259241 Male 28-Jan-22 RAVE 28K

FF COUNTDOWN D9
WILBAR LIFT OFF 869H
WILBAR JENNIFER 151D

RAVENWORTH INNOVATION 33E
RAVENWORTH 33E RUBY 38H
RAVENWORTH RUBY 31E

CONNEALY COUNTDOWN
FF FANTASY B38
PM AVIATOR 19'14
WILBAR JENNIFER 614B

MAR INNOVATION 251
RAVENWORTH RUBY 3U
MOHNEN PULSE 533
RAVENWORTH RUBY 32X

BW	ADJ 205D	ADJ 365D	EPDS	BW	WW	YW	MCE	MILK
85	773	1145		1.2	48	90	4	28



WILBAR LIFT OFF 869H - SIRE



RAVENWORTH INNOVATION 33E
GRANDSIRE

Stylish and eye catching this bull has a fantastic phenotype, starting with admirable head, neck and front shoulder. With a very usable 85 pound birthweight here is a bull with the RAVE 33E grandsire.



ANGUS - YEARLING BULLS



SITZ ALPINE 11076 - SIRE

Tons of hair to go with this super stylish bull. Here was a bull that was next in line for our Angus show string. The dam is from a big bodied powerful cow from our Ruby cow family and has an excellent udder and teat size.

Lot 4

RAVENWORTH Alpine 27K

2259238 Male 28-Jan-22 RAVE 27K

KM BROKEN BOW 002
SITZ ALPINE 11076
SITZ ELLUNAS ELITE 1874

MUSGRAVE FOUNDATION
RAVENWORTH RUBY 28E
RAVENWORTH RUBY 2W

SUMMITCREST COMPLETE 1P55
SUMMITCREST PRINCESS 0P12
MOGCK BULLSEYE
SITZ ELLUNAS ELITE 4011

KESSLERS FRONTMAN R001
MCATL BLACKCAP JUARA 29-434
LINWOOD LAD 18R
LINWOOD RUBY 36P

BW	ADJ 205D	ADJ 365D	EPDS	BW	WW	YW	MCE	MILK
99	717	1254		1.7	53	96	8	25

Lot 5

RAVENWORTH Alpine 46K

2259262 Male 17-Feb-22 RAVE 46K

KM BROKEN BOW 002
SITZ ALPINE 11076
SITZ ELLUNAS ELITE 1874

MUSGRAVE FOUNDATION
RAVENWORTH RUBY 36G
RAVENWORTH RUBY 15A

SUMMITCREST COMPLETE 1P55
SUMMITCREST PRINCESS 0P12
MOGCK BULLSEYE
SITZ ELLUNAS ELITE 4011

KESSLERS FRONTMAN R001
MCATL BLACKCAP JUARA 29-434
THOMAS POWDER RIVER 9053
LINWOOD RUBY 36U

BW	ADJ 205D	ADJ 365D	EPDS	BW	WW	YW	MCE	MILK
92	740	1058		1.4	59	102	7	28



RAVENWORTH RUBY 15A - GRANDAM

This bull's grand dam is one of the most admired cows in our herd, Ravenworth Ruby 15A. With strong maternal traits behind him 46K could be a female maker for you combined with Alpine.

ANGUS - YEARLING BULLS



RAVENWORTH 20Z RUBY 28B - GRANDAM

This super moderate birth weight calf shows real performance, bull is backed by a powerful cow that has an ideal udder. 17K has a great top line which flows nicely into his wide square hip. 17K has the right amount of muscle and smoothness to give him a real special look! Balanced and easy moving this bull would be great on heifers. Here is your chance on another great Alpine son. The dam of this bull is one of Garry's favourite females.

TOP 1% CED

**Heifer
BULL**



Lot 6

RAVENWORTH **Alpine** 17K

2285593 Male 12-Jan-22 RAVE 17K

KM BROKEN BOW 002
SITZ ALPINE 11076
SITZ ELLUNAS ELITE 1874

ROYAL S YELLOWSTONE 29D
RAVENWORTH 29D RUBY 28F
RAVENWORTH 20Z RUBY 28B

BW	ADJ 205D	ADJ 365D	EPIS	BW	WW	YW	MCE	MILK
60	657	1158		-3.9	48	81	14	24

SUMMITCREST COMPLETE 1P55
SUMMITCREST PRINCESS 0P12
MOGCK BULLSEYE
SITZ ELLUNAS ELITE 4011
SOO LINE YELLOWSTONE 9286
ROYAL S PRIDE DOLLY 3B
RAVENWORTH ABERDEEN 20Z
RAVENWORTH RUBY 32X

Lot 7

RAVENWORTH **Alpine** 35K

2259253 Male 08-Feb-22 RAVE 35K

KM BROKEN BOW 002
SITZ ALPINE 11076
SITZ ELLUNAS ELITE 1874

ICC PAY RAISE 4886
RAVENWORTH ELBA 7F
RAVENWORTH ELBA 14Z

SUMMITCREST COMPLETE 1P55
SUMMITCREST PRINCESS 0P12
MOGCK BULLSEYE
SITZ ELLUNAS ELITE 4011
MILL COULEE PAY RAISE
ICC BLACKBIRD 0739
BC EAGLE EYE 110-7
LINWOOD ELBA 20T

BW	ADJ 205D	ADJ 365D	EPIS	BW	WW	YW	MCE	MILK
98	772	1287		2.1	63	108	10	26



RAVENWORTH ELBA 14Z - GRANDAM

The maternal side on this bull offers big performance and docility, combined with Sitz Alpine to produce a bull we admire for his calving ease traits and his growth, which is the combination everyone is looking for. His MGD is a premium elite dam, Ravenworth Elba 14Z. 7F has produced 3 consecutive bulls that made the cut. TOP 15% WW and TOP 20% YW



RAVENWORTH CATTLE

ANGUS - YEARLING BULLS



S A V REIGN 6845 - SIRE

Deep and soggy with a great maternal pedigree. His dam had the high selling Angus bull in 2021 for \$8,500 at the Momentum Sale, she is definitely one of our top producing females. The MGD is a Vermillion Dateline daughter. YW ration of 114. 13K possesses a lot of presence in the pen.

Lot 8 RAVENWORTH **Reign** 13K

2259219 Male 10-Jan-22 RAVE 13K

COLEMAN CHARLO 0256
S A V REIGN 6845
S A V BLACKCAP MAY 4136

MUSGRAVE FOUNDATION
RAVENWORTH RUBY 6F
LINWOOD RUBY 32R

O C C PAXTON 730P
BOHI ABIGALE 6014
S A V 8180 TRAVELER 004
S A V MAY 2397
KESSLERS FRONTMAN R001
MCATL BLACKCAP JUARA 29-434
VERMILION DATELINE 7078
LINWOOD RUBY 11G

BW	ADJ 205D	ADJ 365D	EPDS	BW	WW	YW	MCE	MILK
82	702	1253		1	59	102	9	24

Lot 9 RAVENWORTH **Eagle Eye** 16K

2259346 Male 12-Jan-22 RAVE 16K

B C LOOKOUT 7024
BC EAGLE EYE 110-7
B C PURE PRIDE ERICA D 110

ANKONIAN WERNER WILD FIRE 96
RAVENWORTH RUBY 12Z
LINWOOD RUBY 32R

O C C LEGEND 616L
GIBBET HILL MIGNONNE E37
O C C DOCTOR 940D
CAF PURE PRIDE EXT 99
S A V 8180 TRAVELER 004
FSR ELBA SPECIAL DESIGN S406
VERMILION DATELINE 7078
LINWOOD RUBY 11G

BW	ADJ 205D	ADJ 365D	EPDS	BW	WW	YW	MCE	MILK
90	672	1158		2.8	50	85	1	20



BC EAGLE EYE 110-7 - SIRE



RAVENWORTH RUBY 12Z - DAM
Lots of bone and balance. 16K is a long spined, big hiped, deep sided BC Eagle Eye son. He has a full stifle and carries his lower quarter down and stands on a wide base. Off of another top producing cow from our Angus donor program. This dam produced Ravenworth Ruby 24D, who is currently working in the Everblack Angus herd and produced an \$11,000 bred heifer in the form and function sale. The dam of this bull also has a maternal sib working in the K-Cow Angus herd, Ravenworth Ruby 11C.

ANGUS - YEARLING BULLS



BASIN RAINMAKER 4404 - SIRE

If you are a numbers guy here is an outstanding gaining bull Top 7% for WW and YW. Here is a bull that will put the pounds on your calves in the fall. The dam RAVE 16Z is powerful cow that can make 'em right, her bulls always make the bull pen. 26K's 365d index is 122.



RAVENWORTH
CATTLE

Lot **10**

Lot **10** RAVENWORTH **Rainmaker** 26K

2259236 Male 26-Jan-22 RAVE 26K

BASIN RAINMAKER 2704
BASIN RAINMAKER 4404
BASIN JOY 1036

S CHISUM 6175
RAVENWORTH ELBA 16Z
LINWOOD ELBA 10U

BW	ADJ 205D	ADJ 365D	EPDS	BW	WW	YW	MCE	MILK
98	806	1391		3.2	69	121	5	33

BASIN RAINMAKER P175
BASIN ERICA 7520 BV
BASIN PAYWEIGHT 107S
BASIN JOY 566T

S ALLIANCE 3313 AMF
S GLORIA 464
BON VIEW NEW DESIGN 878
LINWOOD ELBA 3L

Lot **11** RAVENWORTH **Rainmaker** 44K

2259261 Male 17-Feb-22 RAVE 44K

BASIN RAINMAKER 2704
BASIN RAINMAKER 4404
BASIN JOY 1036

THOMAS POWDER RIVER 9053
RAVENWORTH RUBY 6A
RAVENWORTH RUBY 11X

BW	ADJ 205D	ADJ 365D	EPDS	BW	WW	YW	MCE	MILK
98	739	1264		2.1	57	101	7	28

BASIN RAINMAKER P175
BASIN ERICA 7520 BV
BASIN PAYWEIGHT 107S
BASIN JOY 566T

S A V FINAL ANSWER 0035
THOMAS CAROL 7595
TC ABERDEEN 759
LINWOOD RUBY 23U

Here is another great gaining bull from the 4404 sire, with a big, deep side and muscle shape. The mother of this bull, Ravenworth Ruby 6A is a premier elite dam and the grand dam of this bull is also a premier elite cow in the Angus herd book. If you are looking to retain heifers the 4404 bull has a reputation for his females combined with our premier elite dam female line.



RAVENWORTH
CATTLE

Lot **11**

ANGUS - YEARLING BULLS

**Heifer
BULL**



Here is our first offering ever of embryo calves from our Angus herd. We selected Ravenworth Ruby 6B, dam of our show bull Ravenworth International 11J and high selling bull in the 2022 sale for \$8,000 for a half share, for our flush program and we were very pleased with the results to the Sitz Stellar bull, he is making his mark on the world. She flushed and bred back, this line of cows is very fertile. These flush brothers are long spined with a great phenotype and neck extension. Smooth made with muscle dimension our mating here exceeded our expectations, with these great bulls and some real fancy females in our replacement pen. These brothers offer performance with the ability to use on heifers.

Lot 12 **RAVENWORTH Stellar 210K**
2298027 Male 01-Jan-22 RAVE 210K

BW	ADJ 205D	ADJ 365D	EPDS	BW	WW	YW	MCE	MILK
65	577	1161	-0.4	52	93	9	20	

MOHNEN SUBSTANTIAL 272
SITZ STELLAR 726D
SITZ PRIDE 200B OSF

BENFIELD SUBSTANCE 8506
MOHNEN GLYN MAWR ELBA 1758
CONNEALY FINAL PRODUCT
SITZ PRIDE 308Y

K C F BENNETT TOTAL DMF
RAVENWORTH RUBY 6B
RAVENWORTH RUBY 4W

SITZ ALLIANCE 6595
EXT OF CONANGA 6790
LINWOOD LAD 18R
RAVENWORTH RUBY 2S

Lot 13 **RAVENWORTH Stellar 206K**
2298047 Male 01-Jan-22 RAVE 206K

BW	ADJ 205D	ADJ 365D	EPDS	BW	WW	YW	MCE	MILK
50	580	1108	-0.4	52	93	9	20	



RAVENWORTH RUBY 6B - DAM
NATURAL CALF LOT 14

**Heifer
BULL**



SITZ STELLAR 726D - SIRE



RAVENWORTH INTERNATIONAL 11J
MATERNAL SIB

ANGUS - YEARLING BULLS



RAVENWORTH INTERNATIONAL 11J
MATERNAL SIB



WILBAR LIFT OFF 869H - SIRE

**Heifer
BULL**



**RAVENWORTH
CATTLE**

Lot 14

Lot 14

RAVENWORTH Lift Off 19K

2269535 Male 15-Jan-22 RAVE 19K

FF COUNTDOWN D9
WILBAR LIFT OFF 869H
WILBAR JENNIFER 151D

K C F BENNETT TOTAL
RAVENWORTH RUBY 6B
RAVENWORTH RUBY 4W

CONNEALY COUNTDOWN
FF FANTASY B38
PM AVIATOR 19'14
WILBAR JENNIFER 614B

SITZ ALLIANCE 6595
EXT OF CONANGA 6790
LINWOOD LAD 18R
RAVENWORTH RUBY 2S

BW	ADJ 205D	ADJ 365D	EPDS	BW	WW	YW	MCE	MILK
82	650	1148		-1.0	36	66	11	25

When you evaluate 19K, you can't help but find a lot of good. Here is a tremendous phenotype, proud individual that is backed by our 6B donor. Smooth in his makeup, a real heifer bull here, that still has enough performance and punch. Big topped and wide pinned, with a lot of lower quarter, he is sure to sire those calves that everyone wants. Maternal sib to the 2022 Angus high seller Ravenworth International 11J— sold to Wooden Spoke Land and Cattle

Lot 15

RAVENWORTH 869H Lift Off 12K

2259218 Male 08-Jan-22 RAVE 12K

FF COUNTDOWN D9
WILBAR LIFT OFF 869H
WILBAR JENNIFER 151D

CCCJ LOTTO 21E
RAVENWORTH 21E RUBY 36H
RAVENWORTH RUBY 26F

CONNEALY COUNTDOWN
FF FANTASY B38
PM AVIATOR 19'14
WILBAR JENNIFER 614B

BSF HOT LOTTO 1401
TLA BEAUTY 6R
S A V RENOWN 3439
RAVENWORTH RUBY 3U

BW	ADJ 205D	ADJ 365D	EPDS	BW	WW	YW	MCE	MILK
85	666	1193		0.6	42	79	5	25

Here is a bull that we admire for his base width, his stout hip and big top. Rave 12K has a lot of character in his front end. Love this bull on the profile but impresses even more when you get behind him.
TOP 20% For BW



**RAVENWORTH
CATTLE**

Lot 15

ANGUS - YEARLING BULLS



Lot **16**

2269567

Male

28-Feb-22

RAVE 51K

FF COUNTDOWN D9
WILBAR LIFT OFF 869H
WILBAR JENNIFER 151D

CONNEALY COUNTDOWN
FF FANTASY B38
PM AVIATOR 19'14
WILBAR JENNIFER 614B

ROYAL S YELLOWSTONE 29D
RAVENWORTH 29D ELBA 39F
RAVENWORTH 20Z ELBA 33B

S00 LINE YELLOWSTONE 9286
ROYAL S PRIDE DOLLY 3B
RAVENWORTH ABERDEEN 20Z
LINWOOD ELBA 10U

BW	ADJ 205D	ADJ 365D	EPDS	BW	WW	YW	MCE	MILK
89	729	1222		1.2	45	84	3.5	28



Lot **17**

THUNDER CREEK Lift Off 1K

2269526

Male

06-Jan-22

TCD 1K

FF COUNTDOWN D9
WILBAR LIFT OFF 869H
WILBAR JENNIFER 151D

CONNEALY COUNTDOWN
FF FANTASY B38
PM AVIATOR 19'14
WILBAR JENNIFER 614B

PAINTROCK TRAPPER
RAVENWORTH RUBY 9H
RAVENWORTH RUBY 8F

PAINTROCK MOUNTAIN MAN
EMULOUS OF PAINTROCK 93-9
S A V INTERNATIONAL 2020
RAVENWORTH RUBY 15A

BW	ADJ 205D	ADJ 365D	EPDS	BW	WW	YW	MCE	MILK
89	711	1296		1.5	55	100	4.5	25

Easy moving, good structured bull off a strong Paint Rock Trapper daughter. The Lift Off 869H bull really stamped his calves.
Consigned by Thunder Creek Angus



Lot **18**

RAVENWORTH 869H Countdown 1K

2259213

Male

01-Jan-22

RAVE 1K

FF COUNTDOWN D9
WILBAR LIFT OFF 869H
WILBAR JENNIFER 151D

CONNEALY COUNTDOWN
FF FANTASY B38
PM AVIATOR 19'14
WILBAR JENNIFER 614B

PAINTROCK TRAPPER
RAVENWORTH LADY BATE 4H
RAVENWORTH 29D LADY BATE 31F

PAINTROCK MOUNTAIN MAN
EMULOUS OF PAINTROCK 93-9
ROYAL S YELLOWSTONE 29D
RAVENWORTH 68Z LADY BATE 9B

BW	ADJ 205D	ADJ 365D	EPDS	BW	WW	YW	MCE	MILK
80	852	1317		0.7	53	96	7	23

A big beefy bull here. If you are looking for a high gaining offspring, here is your chance.
TOP 7% for WW and 8% for YW
Twin



WILBAR LIFT OFF 869H - SIRE

51K offers a big centre of body, massive ribbed and lots of muscle expression. The dam of this bull, Ravenworth Ruby 39F is one of the biggest middled Angus cows in our herd and that is saying something.

Lot 19 RAVENWORTH 869H Countdown 5K

2269581 Male 01-Jan-22 RAVE 5K

FF COUNTDOWN D9
WILBAR LIFT OFF 869H
WILBAR JENNIFER 151D

MUSGRAVE FOUNDATION
RAVENWORTH LADY BATE 20H
RAVENWORTH LADY BATE 10B

CONNEALY COUNTDOWN
FF FANTASY B38
PM AVIATOR 19'14
WILBAR JENNIFER 614B

KESSLERS FRONTMAN R001
MCATL BLACKCAP JUARA 29-434
BC EAGLE EYE 110-7
RAVENWORTH LADY BATE 6X

BW	ADJ 205D	ADJ 365D	EPDS	BW	WW	YW	MCE	MILK
83	776	1244		0	59	102	6	29

a long spined and growthy son of a first calver. We expect our heifers to perform and can see that she has done an outstanding job
RAVE 5K TOP 10% for BW



Lot 20 RAVENWORTH 869H Countdown 6K

2269579 Male 02-Jan-22 RAVE 6K

FF COUNTDOWN D9
WILBAR LIFT OFF 869H
WILBAR JENNIFER 151D

S A V BRILLIANCE 8077
RAVENWORTH RUBY 37H
RAVENWORTH RUBY 32X

CONNEALY COUNTDOWN
FF FANTASY B38
PM AVIATOR 19'14
WILBAR JENNIFER 614B

S A V BISMARCK 5682
S A V BLACKCAP MAY 5270
RAVENWORTH LAD 6U
LINWOOD RUBY 19T

BW	ADJ 205D	ADJ 365D	EPDS	BW	WW	YW	MCE	MILK
95	776	1158		2.6	54	96	4	28

This Brilliance daughter has raised a bull that exhibits a lot of style and squareness. Clean fronted and smooth, he will add some look to his progeny.



Lot 21 RAVENWORTH 869H Countdown 7K

2269553 Male 02-Jan-22 RAVE 7K

FF COUNTDOWN D9
WILBAR LIFT OFF 869H
WILBAR JENNIFER 151D

RAVENWORTH INNOVATION 33E
RAVENWORTH 33E RUBY 44H
RAVENWORTH RUBY 28E

CONNEALY COUNTDOWN
FF FANTASY B38
PM AVIATOR 19'14
WILBAR JENNIFER 614B

MAR INNOVATION 251
RAVENWORTH RUBY 3U
MUSGRAVE FOUNDATION
RAVENWORTH RUBY 2W

BW	ADJ 205D	ADJ 365D	EPDS	BW	WW	YW	MCE	MILK
79	661	1058		0.5	40	79	4	25

A lower birthweight bull here, another long, smooth sided bull that could be used on heifers.
TOP 15% for BW



COLGAN'S SHOW SUCCESS

COLGAN'S SHOW SUCCESS



WOLF LAKE IDA 4J

Canadian Western Agribition Reserve Grand Champion Female



WOLF LAKE IDA 4J

Canadian Western Agribition First Lady Classic Champion Speckle Park, placing 6th in the all breeds.



WOLF LAKE IDA 4J

Edmonton Farm Fair International Reserve Grand Champion Female



WOLF LAKE IDA 4J

Manitoba Ag Expo Grand Champion Female



WOLF LAKE IDA 4J

Prince Albert Exhibition Grand Champion Female



WOLF LAKE IDA 4J

Co-owned with Lazar Livestock



COLGAN'S JENNINGS 37J

Canadian Western Agribition Reserve Intermediate Junior Bull
Owned by Skye Line Farms



COLGAN'S JENNINGS 37J

Farm Fair International Champion Intermediate Junior Bull



COLGAN'S JENNINGS 37J

Manitoba Ag Expo Reserve Junior Bull



COLGAN'S KINGSMAN 01K

Farm Fair International Champion Senior Bull Calf



COLGAN'S KINGSMAN 01K

Manitoba Ag Expo Reserve Grand Champion Bull



COLGAN'S KAUAI 43K

Manitoba Ag Expo Champion Heifer Calf
Purchased by McAleer Ranching



RAVENWORTH CATTLE

2022 MISS WORLD SPECKLE PARK



RAVENWORTH WILLOW 510H
Canadian Western Agribition Grand Champion Female



RAVENWORTH WILLOW 510H
Edmonton Farm Fair Grand Champion Female



RAVENWORTH WILLOW 510H
Manitoba Ag Ex Champion Senior Female



RAVENWORTH KRAKEN 505J
Edmonton Farm Fair Grand Champion Bull



RAVENWORTH KRAKEN 505J
Lloydminster Stockade Round Up Grand Champion Bull



RAVENWORTH KRAKEN 505J
Canadian Western Agribition Reserve Senior Yearling Bull



CHAMPION PAIR OF BULLS
Lloydminster Cattlemen Call
Lots 40 & 43



RAVENWORTH 505J
Prince Albert Fair Reserve Champion Bull
Co-owned with Wold Lake Speckle Park



RAVENWORTH INVICTUS 103C
Canadian Western Agribition Champion Get of Sire

SPECKLE PARK - YEARLING BULLS


COLGAN'S
 CATTLE COMPANY
 TONY, TAMMY, COLTON AND LOGAN FREIMARK
 SITE 905 COMP 60 RR 9 LCD MAIN
 SASKATOON, SK S7K 1P3
 TONY: 306-830-8239 TAMMY: 306-830-8787
 COLGANS CATTLE@SASKTEL.NET
 WWW.COLGANS CATTLE.COM



we have focused on promoting the breed to the commercial cattlemen and ultimately the end consumer through our new business Canadian Speckle Park Beef.

Colgan's Cattle Company



Lot **22**

Lot **22**

COLGAN'S **Kingpin** 38K

CAN15972 Male 12-Feb-22 CCCC 38K Pure Bred

CAJA ZEPPELIN 1B
GREENWOOD HEADLINER 71H
 WREN OF P.A.R. 70E

UNEEDA ZAPPER 13Z
 NOTTA 60W PHOTO-FINISH 1Z
 P.A.R. ARRÊT 38A
 WREN OF P.A.R. 7Z

COLGAN'S BAXTER 1B
COLGAN'S GENESIS 21G
 CODIAK URE IT GNK 48U

MOOVIN ZPOTZ CAMARO 6X
 MOOVIN ZPOTZ ROXY AMBER 4R
 CODIAK KOSMO GNK 17R
 NORALTA HALETTE 11H

BW	ADJ 205D	ADJ 365D	Myostatin	Coat Colour	Polled
78	723	1192	NT821,1	ED/ED	P/P



GREENWOOD HEADLINER 71H
 SIRE - LOTS 22-25, 34, 39

Greenwood Headliner 71H was purchased in the summer of 2020 from Payne's pasture. After a successful show season as a calf he was used to breed most of our replacement heifers and he is proving to be a consistent breeding piece that adds middle, muscle mass and performance. Colgan's Kingpin 38K has a power-packed pedigree, Headliner paired with General's full sister. Kingpin will be sure to add pounds to the calves.

SPECKLE PARK - YEARLING BULLS



RIVERHILL FABULOUS PEARL 28F
MATERNAL GRANDAM



COLGAN'S KINCAID 03K

A Headliner sired bull from a first calver that will mark your cows. Added bonus...this bull is halter broke and has show experience.



Lot **23**

Lot **23**

COLGAN'S **Kincaid** 03K

CAN15460 Male 05-Jan-22 CCCC 03K Pure Bred

CAJA ZEPELIN 1B
GREENWOOD HEADLINER 71H
WREN OF P.A.R. 70E

RIVER HILL 5C FIRST-RATE 859F
TRESTLE CREEK HENDRIX 1H
RIVER HILL FABULOUS PEARL 28F

UNEEDA ZAPPER 13Z
NOTTA 60W PHOTO-FINISH 1Z
P.A.R. ARRÊT 38A
WREN OF P.A.R. 7Z

CODIAK CAPITAINE GNK 5C
RIVER HILL 54Z CORA-JADE 59C
RIVER HILL 50T CRUSADER 025C
CODIAK BLACK PEARL 28X

BW	ADJ 205D	ADJ 365D	MYOSTATIN	COAT COLOUR	POLLED
82	706	1137	NT821,1	ED/ED	P/P



GREENWOOD HALO 08H - DAM



COLGAN'S KANTARO 04K

Another heifer that didn't disappoint with her first calf.

Lot **24**

COLGAN'S **Kantaro** 04K

CAN15461 Male 06-Jan-22 CCCC 04K Pure Bred

CAJA ZEPELIN 1B
GREENWOOD HEADLINER 71H
WREN OF P.A.R. 70E

SECOND CHANCE BAZINGA 2B
GREENWOOD HALO 8H
A & W 7Y

UNEEDA ZAPPER 13Z
NOTTA 60W PHOTO-FINISH 1Z
P.A.R. ARRÊT 38A
WREN OF P.A.R. 7Z

LEGACY DEVITO 44X
RIVER HILL TIC-TAC 02T
CODIAK ZACHERY GNK 6U
A & W BLACK MAGIC 7S

BW	ADJ 205D	ADJ 365D	MYOSTATIN	COAT COLOUR	POLLED
82	670	1073	No Variants	ED/ED	P/P



Lot **24**

SPECKLE PARK - YEARLING BULLS



Lot 25



BEAUTY MELISSA OF PAR 561B
MATERNAL GRANDAM

This bulls dam has an udder comparable to her dam, PAR 561B.

Lot 25

COLGAN'S **Kraven** 08K

CAN15459 Male 07-Jan-22 CCCC 08K Pure Bred

CAJA ZEPPELIN 1B
GREENWOOD HEADLINER 71H
WREN OF P.A.R. 70E

COLGAN'S BAXTER 1B
COLGAN'S HEARTACHE 04H
BEAUTY MELISSA OF P.A.R. 561B

UNEEDA ZAPPER 13Z
NOTTA 60W PHOTO-FINISH 1Z
P.A.R. ARRÊT 38A
WREN OF P.A.R. 7Z

MOOVIN ZPOTZ CAMARO 6X
MOOVIN ZPOTZ ROXY AMBER 4R
UNEEDA YULE TIDE OF PAR 05Y
MELISSA II OF P.A.R. 56X

BW	ADJ 205D	ADJ 365D	MYOSTATIN	COAT COLOUR	POLLED
78	659	1057	NT821,1	ED/ED	P/P

Lot 26

COLGAN'S **Khobra** 11K

CAN16716 Male 10-Jan-22 CCCC 11K Pure Bred

AVERY CREEK BANJO 01B
COLGAN'S GLADIATOR 40G
CODIAK UNIQUE GNK 8R

COLGAN'S BAXTER 1B
COLGAN'S GOTTLICHE GODDESS 36G
COLGAN'S CAMIRA 14C

ZORRO MATTERS 1Z
TUMBLEWEED ACRES LULU 18Y
CODIAK MR. BLACK RKW 13M
CODIAK RKW 07J

MOOVIN ZPOTZ CAMARO 6X
MOOVIN ZPOTZ ROXY AMBER 4R
CODIAK TRUMP GNK 20T
SPOTS 'N SPROUTS 17Y

BW	ADJ 205D	ADJ 365D	MYOSTATIN	COAT COLOUR	POLLED
82	599	960	No Variants	ED/ED	P/P



Lot 26



COLGAN'S CAMIRA 14C
MATERNAL GRANDAM

If you are looking for a quiet bull, here's your bull. He has his maternal grandsire's disposition.

SPECKLE PARK - YEARLING BULLS



COLGAN'S DEXTER D'ANGELO 01D
MATERNAL GRANDSIRE



COLGAN'S DAMARIS 03D
MATERNAL GRANDAM



Lot **27**

Lot **27**

COLGAN'S **Kingston** 23K

CAN15463 Male 16-Jan-22 CCCC 23K Pure Bred

AVERY CREEK BANJO 01B
COLGAN'S GLADIATOR 40G
CODIAK UNIQUE GNK 8R

COLGAN'S DEXTER D'ANGELO 01D
COLGAN'S FEMME FATALE 33F
COLGAN'S DAMARIS 03D

ZORRO MATTERS 1Z
TUMBLEWEED ACRES LULU 18Y
CODIAK MR. BLACK RKW 13M
CODIAK RKW 07J

CODIAK TYCOON CAT GNK 12Z
SPOTS 'N SPROUTS 10Y
COLGAN'S BAXTER 1B
BEAUTY MELISSA OF P.A.R. 561B

BW	ADJ 2050	ADJ 3650	MYOSTATIN	COAT COLOUR	POLLED
82	629	1038	No Variants	ED/ED	P/P

Lot **28**

COLGAN'S **Krippendorf** 21K

CAN16718 Male 14-Jan-22 CCCC 21K 93.8%

AVERY CREEK BANJO 01B
COLGAN'S GLADIATOR 40G
CODIAK UNIQUE GNK 8R

MOOVIN ZPOTZ UNTOUCHABLE 4U
MOOVIN ZPOTZ ALICE 3A
MOOVIN ZPOTZ SIDNEY 8S

ZORRO MATTERS 1Z
TUMBLEWEED ACRES LULU 18Y
CODIAK MR. BLACK RKW 13M
CODIAK RKW 07J

HWY 4 SPECKLE PARK 2R
HWY.4 SPECKLE PARK 3K
CALAMASUE 4M
MONA OF P.A.R. 3M

BW	ADJ 2050	ADJ 3650	MYOSTATIN	COAT COLOUR	POLLED
81	591	991	No Variants	ED/ED	P/P



CODIAK UNIQUE GNK 8R
PATERNAL GRANDAM - LOTS 26 - 28,36



AVERY CREEK BANJO 01B
PATERNAL GRANDSIRE - LOTS 26-28,36



Lot **28**



Lot **29**

Lot **29**

COLGAN'S Kristoff 07K

CAN16715 Male 07-Jan-22 CCCC 07K Pure Bred

COLGAN'S BAXTER 1B
COLGAN'S GENERAL 20G
CODIAK URE IT GNK 48U

MOOVIN ZPOTZ CAMARO 6X
MOOVIN ZPOTZ ROXY AMBER 4R
CODIAK KOSMO GNK 17R
NORALTA HALETTE 11H

COLGAN'S CAPONE LF 05C
COLGAN'S FANTASIA 04F
SPOTS 'N SPROUTS 17Y

CODIAK TYCOON CAT GNK 12Z
SHER SPECS PAPERTRAIL 16Y
SPOTS 'N SPROUTS UTOPIA 104U
SPOTS 'N SPROUTS 01S

BW	ADJ 205D	ADJ 365D	Myostatin	Coat Colour	Polled
54	590	1004	No Variants	ED/ED	P/P

This is your first opportunity to purchase and our only offering of a Colgan's General 20G sired bull from our herd, as General produced 95+% purebred females last year. Kristoff 07K is a twin weighing 54lbs at birth. He had a rough start but finished strong!!



COLGAN'S GENERAL 20G - SIRE LOTS 29, 32, 33, 37



COLGAN'S FANTASIA 04F - DAM



SPOTS 'N SPROUTS 17Y - MATERNAL GRANDAM

SPECKLE PARK - YEARLING BULLS



COLGAN'S DIAMOND 116D
DAM - LOTS 30, 35



Lot **30**

Lot **30** COLGAN'S **Kleinstock** 48K

CAN16875 Male 20-Feb-22 CCCC 48K Pure Bred

ASPEN ACRES T.N.T. 4Y
JSF WALL STREET 36E
REDNECK WHISKEY 7W

COLGAN'S BAXTER 1B
COLGAN'S DIAMOND 116D
RAVENWORTH WESTERN JEWEL 116B

SPOTS AND SPROUTS DYNAMITE 23T
ASPEN ACRES 4U
REDNECK RANCH'S TEDDY 5T
REDNECK RANCH'S SCARLET 1S

MOOVIN ZPOTZ CAMARO 6X
MOOVIN ZPOTZ ROXY AMBER 4R
RIVER HILL 12X ZAAR 7Z
RIVER HILL 101U YOLA 35Y

BW	ADJ 205D	ADJ 365D	MYOSTATIN	COAT COLOUR	POLLED
82	598	1005	No Variants	ED/ED	P/P

Lot **31** COLGAN'S **Kokanee** 42K

CAN16877 Male 12-Feb-22 CCCC 42K Pure Bred

UNEEDA ZAPPER 13Z
CAJA ZEPPELIN 1B
NOTTA 60W PHOTO-FINISH 1Z

RAVEN MEADOWS MAGNUM 10N
UPTO SPECS WILLA 17W
UPTO SPECS RAE 2R

UNEEDA WALTER 21W
MISTY FRITZ OF P.A.R. 13M
RIVER HILL 26T WALKER 60W
NOTTA PHO-FINISH 54P

SPRUCE LANE VENTURE 3J
PARKLAND SPECKLE PARK 10J
PRAIRIE HILL NEW DEAL 85N
UPTO SPECS NOLA 21N

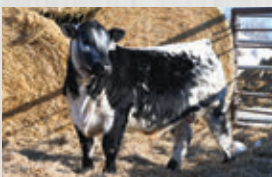
BW	ADJ 205D	ADJ 365D	MYOSTATIN	COAT COLOUR	POLLED
85	586	996	No Variants	ED/ED	P/P



CAJA ZEPPELIN 1B - SIRE



UPTO SPECS WILLA 7W - DAM



Lot **31**



Lot **32**

COLGAN'S **Krizia** 22K

CAN16857 Female 14-Jan-22 CCCC 22K Pure Bred

COLGAN'S BAXTER 1B
COLGAN'S GENERAL 20G
CODIAK URE IT GNK 48U

MOOVIN ZPOTZ CAMARO 6X
MOOVIN ZPOTZ ROXY AMBER 4R
CODIAK KOSMO GNK 17R
NORALTA HALETTE 11H

STEELE FRONT RUNNER 5E
COLGAN'S TAFFETA 48G
COLGAN'S CHIFFON 11C

UPTO SPECS ULYSSES 25U
LEGACY UNITY 51X
CODIAK ALEXANDER GNK 75A
TAFFETA OF P.A.R. 01A

BW	ADJ 205D	ADJ 365D	Myostatin	Coat Colour	Polled
76	552	828	No Variants	ED/ED	P/P

A quote from Nicki we promised we would include "This heifer has an ass like J-Lo" which definitely compliments her wide top.



CODIAK URE IT GNK 48U
GRANDAM - LOTS 22, 29, 32, 33, 36, 37, 39



UPTO SPECS ULYSSES 25U
MATERNAL GREAT GRANDSIRE

SPECKLE PARK - FEMALES



COLGAN'S BAXTER 1B
PATERNAL GRANDSIRE

A General heifer that would compliment any herd and should develop into a female with mass and performance.



Lot **33**

Lot **33**

COLGAN'S **Kokomo** 02K

CAN15454 Female 04-Jan-22 CCCC 02K Pure Bred

COLGAN'S BAXTER 1B
COLGAN'S GENERAL 20G
CODIAK URE IT GNK 48U

MZ YOGI OF COLD CREEK 17Y
MOOVIN ZPOTZ BACKWOODSBABE 63B
MOOVIN ZPOTZ ICY GALAXIE 29X

MOOVIN ZPOTZ CAMARO 6X
MOOVIN ZPOTZ ROXY AMBER 4R
CODIAK KOSMO GNK 17R
NORALTA HALETTE 11H

CALAMASUE 46U
BETH OF P.A.R. 74P
MOOVIN ZPOTZ UNIFY 6U
MATTI OF P.A.R. 25M

BW	ADJ 205D	ADJ 365D	MYOSTATIN	COAT COLOUR	POLLED
78	560	849	No Variants	ED/ED	P/P

Lot **34**

COLGAN'S **Kirika** 09K

CAN15968 Female 08-Jan-22 CCCC 09K Pure Bred

CAJA ZEPPELIN 1B
GREENWOOD HEADLINER 71H
WREN OF P.A.R. 70E

COLGAN'S BAXTER 1B
COLGAN'S HEIRESS 36H
COLGAN'S DUCHESS 34D

UNEEDA ZAPPER 13Z
NOTTA 60W PHOTO-FINISH 1Z
P.A.R. ARRÊT 38A
WREN OF P.A.R. 7Z

MOOVIN ZPOTZ CAMARO 6X
MOOVIN ZPOTZ ROXY AMBER 4R
CODIAK GNK 24X
CODIAK GNK 24T

BW	ADJ 205D	ADJ 365D	MYOSTATIN	COAT COLOUR	POLLED
84	562	903	NT821,1	ED/ED	P/P



WREN OF PAR 70E
PATERNAL GRANDAM - LOTS 22 - 25,34,39

Kirika 09K is the only Headliner sired heifer that we are offering for sale this year. She was Chris's 'pick' for this sire group.



Lot **34**

SPECKLE PARK - FEMALES



Lot 35

Lot 35 COLGAN'S **Knockout** 37K

CAN15971 Female 10-Feb-22 CCCC 37K Pure Bred

ASPEN ACRES T.N.T. 4Y
JSF WALL STREET 36E
REDNECK WHISKEY 7W

COLGAN'S BAXTER 1B
COLGAN'S DIAMOND 116D
RAVENWORTH WESTERN JEWEL 116B

SPOTS AND SPROUTS DYNAMITE 23T
ASPEN ACRES 4U
REDNECK RANCH'S TEDDY 5T
REDNECK RANCH'S SCARLET 1S

MOOVIN ZPOTZ CAMARO 6X
MOOVIN ZPOTZ ROXY AMBER 4R
RIVER HILL 12X ZAAR 7Z
RIVER HILL 101U YOLA 35Y

BW	ADJ 205D	ADJ 365D	MYOSTATIN	COAT COLOUR	POLLED
80	495	751	No Variants	ED/ED	P/P

Lot 36 COLGAN'S **Katsano** 52K

CAN16865 Female 28-Feb-22 CCCC 52K Pure Bred

AVERY CREEK BANJO 01B
COLGAN'S GLADIATOR 40G
CODIAK UNIQUE GNK 8R

COLGAN'S BAXTER 1B
COLGAN'S GENESIS 21G
CODIAK URE IT GNK 48U

ZORRO MATTERS 1Z
TUMBLEWEED ACRES LULU 18Y
CODIAK MR. BLACK RKW 13M
CODIAK RKW 07J

MOOVIN ZPOTZ CAMARO 6X
MOOVIN ZPOTZ ROXY AMBER 4R
CODIAK KOSMO GNK 17R
NORALTA HALETTE 11H

BW	ADJ 205D	ADJ 365D	MYOSTATIN	COAT COLOUR	POLLED
88	568	933	No Variants	ED/ED	P/P



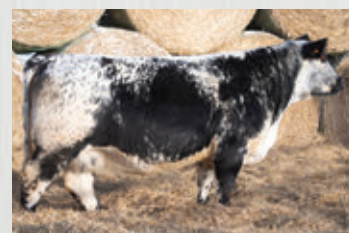
JSF WALLSTREET 36E
SIRE - LOTS 30, 35



RAVENWORTH WESTERN JEWEL 116B
MATERNAL GRANDAM - LOTS 30, 35, 38



Lot 36



COLGAN'S GENESIS 21G
DAM LOTS 22, 36, 39

Katsano 52K is Genesis 21G's natural heifer calf that is the youngest heifer Colgan's is offering but most likely the highest performing. Half sibling to Lot 22.

SPECKLE PARK - EMBRYOS



COLGAN'S KISS AND TELL 27K
GENERAL 20G X EMMA 1E

Like father like son!! Power, performance and disposition. We are offering the opportunity to purchase 4 embryos, 2 from each sire. We have retained CCCC 27K in our herd to break and show in the 2023 show season.



MYOSTATIN	COAT COLOUR	POLLED
No Variants	ED/ED	P/P

Spots 'N Sprouts Emma 1E

Lot **37**

General 20G x Emma 1E 2 EMBRYOS

COLGAN'S BAXTER 1B
COLGAN'S GENERAL 20G
CODIAK URE IT GNK 48U

SPOTS 'N SPROUTS BRAVO 118B
SPOTS 'N SPROUTS EMMA 1E
SPOTS 'N SPROUTS 1B

MOOVIN ZPOTZ CAMARO 6X
MOOVIN ZPOTZ ROXY AMBER 4R
CODIAK KOSMO GNK 17R
NORALTA HALETTE 11H

UNEEDA Yael 06Y
SHER SPECS SUNDAY 23Y
SIX STAR 82U ROYAL FLESH 101Y
SPOTS 'N SPROUTS 2U

Baxter 1B x Emma 1E 2 EMBRYOS

MOOVIN ZPOTZ CAMARO 6X
COLGAN'S BAXTER 1B
MOOVIN ZPOTZ ROXY AMBER 4R

SPOTS 'N SPROUTS BRAVO 118B
SPOTS 'N SPROUTS EMMA 1E
SPOTS 'N SPROUTS 1B

LEGACY TURNPIKE CRUISER 27T
STYALS LUCKY PRINCESS 9L
P.A.R. MR. POWERSTROKE 4M
MATTI OF P.A.R. 25M

UNEEDA Yael 06Y
SHER SPECS SUNDAY 23Y
SIX STAR 82U ROYAL FLESH 101Y
SPOTS 'N SPROUTS 2U

Embryos are stored at Davis Rairdan Embryo Transplants. Storage and delivery fees are the responsibility of the purchaser. Qualified for Australia, Europe and North America. Calves are eligible to be registered as purebred. .



MYOSTATIN	COAT COLOUR	POLLED
No Variants	ED/ED	P/P

Colgan's General 20G



MYOSTATIN	COAT COLOUR	POLLED
No Variants	ED/ED	P/P

Colgan's Baxter 1B



COLGAN'S GEMINI 02G

Lot 38 Jus Chillin 302F x Gemini 02G 3 EMBRYOS

SPOTS 'N SPROUTS BART 110B
NOTTA 110B JUS CHILLIN 302F
NOTTA 300X THETA 11A

COLGAN'S BAXTER 1B
COLGAN'S GEMINI 02G
RAVENWORTH WESTERN JEWEL 116B

STAR BANK 64R REMEDY 9W
SPOTS 'N SPROUTS 2W
SPOTS 'N SPROUTS STANDS ALONE
STAR BANK THETA 42T

MOOVIN ZPOTZ CAMARO 6X
MOOVIN ZPOTZ ROXY AMBER 4R
RIVER HILL 12X ZAAR 7Z
RIVER HILL 101U YOLA 35Y

Colgan's Gemini 02G

MYOSTATIN	COAT COLOUR	POLLED
No Variants	ED/ED	P/P

Embryos are stored at Davis Rairdan Embryo Transplants. Storage and delivery fees are the responsibility of the purchaser. Qualified for Australia, Europe and North America. Calves are eligible to be registered as purebred. .



SPOTS 'N SPROUTS STANDS ALONE
PATERNAL GREAT GRANDSIRE

MYOSTATIN	COAT COLOUR	POLLED
No Variants	ED/ED	P/P

Notta 110B Jus Chillin 302F



Lot 39

Headliner 71H x Genesis 21G
3 EMBRYOS

CAJA ZEPELIN 1B
GREENWOOD HEADLINER 71H
WREN OF P.A.R. 70E

COLGAN'S BAXTER 1B
COLGAN'S GENESIS 21G
CODIAK URE IT GNK 48U

UNEEDA ZAPPER 13Z
NOTTA 60W PHOTO-FINISH 1Z
P.A.R. ARRÉT 38A
WREN OF P.A.R. 7Z

MOOVIN ZPOTZ CAMARO 6X
MOOVIN ZPOTZ ROXY AMBER 4R
CODIAK KOSMO GNK 17R
NORALTA HALETTE 11H

Colgan's Genesis 21G

MYOSTATIN	COAT COLOUR	POLLED
No Variants	ED/ED	P/P

Embryos are stored at Davis Rairdan Embryo Transplants. Storage and delivery fees are the responsibility of the purchaser. Qualified for Australia, Europe and North America. Calves are eligible to be registered as purebred. .

We were so impressed with the calves from the first flush of this mating that we flushed the same in 2022. Lot 22, Colgan's Kingpin 38K is a full sib and we retained two sisters as replacement heifers.



MYOSTATIN	COAT COLOUR	POLLED
NT821,1	ED/ED	P/P

Greenwood Headliner 71H

SPECKLE PARK - YEARLING BULLS

RAVENWORTH
CATTLE

GARRY AND DONNA BERTING
BOX 134

MIDDLE LAKE, SK S0K 2X0

GARRY: 306-231-7567

DONNA: 306-231-5175

GARRY@RAVENWORTH.COM

WWW.RAVENWORTH.COM



Ravenworth we are happy to answer any questions that you may have in selecting genetics for your herd and we love to talk cattle so give us a call, come tour the bulls and females or shoot us a message.

*We reserve the right to draw on farm semen at the new owners convenience and at our cost on any the Ravenworth Bulls on offer in this sale.

Ravenworth Cattle Speckle Park

We are very pleased to present our 2023 offering of Speckle Park live lots and frozen genetics. This year our offering includes some new matings to our herd sires and some proven tried and true genetics. All of the cattle are raised on a ration with longevity in mind. Our goal when breeding cattle is to build upon the past generations to forge future greatness. With this always in mind our carefully planned breedings are of the utmost importance to us. You will find many of our top bloodlines and cow families in our sale offering enabling purchasers to start off right where we are today. Here at



RAVENWORTH
CATTLE

Lot **40**

Lot **40**

RAVENWORTH Neo 305K

CAN15343 Male 15-Jan-22 GDB 305K Pure Bred

STAR BANK KING GEORGE 82U
INC ASSASSIN 777G
CODIAK GYPSY RAIN GNK 63B

SPOTS 'N SPROUTS NEFROM 101N
STAR BANK 11H
CODIAK OSCAR GNK 8S
CODIAK SHELLY GNK 11X

RAVENWORTH INVICTUS 103C
RAVENWORTH LIGHTNING LADY 126F
RAVENWORTH LIGHTNING LADY 120C

RAVENWORTH KLEOS 3Y
RAVENWORTH NORTHERN STAR 101A
RAVENWORTH NAVIGATOR 15Z
SIX STAR LIGHTNING LADY 22W

BW	ADJ 205D	ADJ 365D	Myostatin	Coat Colour	Polled
91	595	1073	No Variants	ED/ED	P/P

Here is a bull that made a splash all fall and winter at the shows. From his great ears all the way to his hind quarter this bull has eye appeal, style and muscle shape. Leading him around at any of the shows or standing in the marshalling areas produced many compliments and smiles, he definitely does not go unnoticed. He is a thick, wide topped bull with great spring of rib. Genuinely docile temperament to go along with the package. His dam is from the Lightning Lady cow family and MGS is Ravenworth Invictus 103C. His Sire is INC Assassin 777G which we selected for his eye appeal and pedigree. Good scrotal. Neo placed first in his class at Agribiton. Here is an excellent opportunity to add some real style to your next calf crop.

Terms: Selling half possession & half semen interest. Retaining show rights



RAVENWORTH LIGHTNING LADY 126F - DAM



RAVENWORTH INVICTUS 103C - MATERNAL GRANDSIRE



RAVENWORTH NEO 305K

SPECKLE PARK - YEARLING BULLS

Thanos 311K is another Assassin son and many of the same traits followed through. Here is a well balanced bull with a great head neck and shoulder. Wide topped and full thru to his hip, this bull is great on the move. Like his brother, Neo, this bull shares the length of spine, eye appeal and big middle. When looking at these more than half brothers, you can see a mating is great when it works more than once.



Lot **41**

RAVENWORTH **Thanos** 311K

CAN15345 Male 29-Jan-22 GDB 311K Pure Bred

STAR BANK KING GEORGE 82U
INC ASSASSIN 777G
CODIAK GYPSY RAIN GNK 63B

RAVENWORTH TYCHO 106E
RAVENWORTH LIGHTNING LADY 114G
RAVENWORTH LIGHTNING LADY 114E

SPOTS 'N SPROUTS NEFROM 101N
STAR BANK 11H
CODIAK OSCAR GNK 8S
CODIAK SHELLY GNK 11X

RIVER HILL 12X ZAAR 7Z
STAR BANK SILKEN 83S
RAVENWORTH INVICTUS 103C
STAR BANK SEQUIN 84S

BW	ADJ 205D	ADJ 365D	MYOSTATIN	COAT COLOUR	POLLED
88	685	1042	No Variants	ED/ED	P/P

Lot **42**

RAVENWORTH **Knox** 317K

CAN16772 Male 08-Feb-22 GDB 317K Pure Bred

RAVENWORTH KLEOS 3Y
RAVENWORTH INVICTUS 103C
RAVENWORTH NORTHERN STAR 101A

RIVER HILL 12X ZAAR 7Z
RAVENWORTH ACADIA 116C
STAR BANK AVALANCHE 17W

STAR BANK 64R RIO 6W
STAR BANK TUCANA 38T
SPOTS 'N SPROUTS STANDS ALONE
STAR BANK NIGHTGLOW 46N

CODIAK FIDDLER GNK 12X
RIVER HILL 12U X-ULTRA 07X
NOTTA ROMEO 64R
STAR BANK 45R

BW	ADJ 205D	ADJ 365D	MYOSTATIN	COAT COLOUR	POLLED
95	601	1044	No Variants	ED/ED	P/P

Here is a son of the renowned Ravenworth Invictus 103C. Invictus sired the bull and cow in our show string this past fall and they both went on to be champions and double qualified for the Supreme at Agribition. The cow, Ravenworth Willow 510H went on to be 2022 Miss World - Speckle Park and top 8 of all breeds. Invictus's greatest accomplishment is ability to be consistent with his calves type, kind and style. 317K has tremendous muscle shape, balance and performance. Here is a bull that will definitely add some consistency into your calf crop.





Lot **43**

RAVENWORTH **Hydraulic** 306K

CAN15344 Male 18-Jan-22 GDB 306K Pure Bred

WRANGLER MR PERFECT 8D
RIVER HILL HI-TYDE 065H
RIVER HILL 99W YSABEL 65Y

MOOVIN ZPOTZ AVENGER 28A
ANGEL OF P.A.R. 8Z
RIVER HILL 03M WILD CARD 99W
PRAIRIE HILL 65M

RAVENWORTH INVICTUS 103C
RAVENWORTH LIGHTNING LADY 105E
RAVENWORTH LIGHTNING LADY 120C

RAVENWORTH KLEOS 3Y
RAVENWORTH NORTHERN STAR 101A
RAVENWORTH NAVIGATOR 15Z
SIX STAR LIGHTNING LADY 22W

BW	ADJ 205D	ADJ 365D	Myostatin	Coat Colour	Polled
84	582	960	No Variants	ED/ED	P/P

Hydraulic 306K was in our showstring this past fall and winter and the interesting piece to the puzzle is 305K & 306K - our two show bulls - are off of full sib sister cows. Intentionally breeding the sisters to completely different sires gave us an opportunity to watch them develop and both making our show string tells us the dams worked well with both. With a tick more bone from the River Hill Hy-Tyde bull while still having the attractive head, neck and shoulder shape from the cow side here is a smart stylish bull. Very structurally correct and balanced Donna has appreciated this bull throughout the entire show season watching him grow and develop. He is our first offering from our walking bull River Hill Hy-Tyde 065H. The dam of this bull is one of the quietest cattle in our entire herd.

Terms: Selling full possession and half semen interest



RAVENWORTH LIGHTNING LADY 105E - DAM



RIVER HILL HI-TYDE 065H - SIRE



RAVENWORTH HYDRAULIC 306K

SPECKLE PARK - YEARLING BULLS

Don't kid yourself this bull came home for the show string as an alternate to Hydraulic. But, alas the trailer is only so big... and we only have one double blower. The dam of this bull is the powerful Ravenworth Prairie Lily 124D our bull making machine, she most recently is the dam of Ravenworth Midas 105G, Ravenworth Rockstar and now Ravenworth Hyperion 319K. This cow powers up her bull calves like no other, with great muscle shape and overall dimension and always great performance.



Lot 44 RAVENWORTH **Hyperion** 319K

CAN15346 Male 10-Feb-22 GDB 319K Pure Bred

WRANGLER MR PERFECT 8D
RIVER HILL HI-TYDE 065H
RIVER HILL 99W YSABEL 65Y

RIVER HILL 12X ZAAR 7Z
RAVENWORTH PRAIRIE LILY 124D
STAR BANK TWINKLE 51T

MOOVIN ZPOTZ AVENGER 28A
ANGEL OF P.A.R. 8Z
RIVER HILL 03M WILD CARD 99W
PRAIRIE HILL 65M

CODIAK FIDDLER GNK 12X
RIVER HILL 12U X-ULTRA 07X
SPOTS 'N SPROUTS NEFROM 101N
STAR BANK 2H

BW	ADJ 205D	ADJ 365D	MYOSTATIN	COAT COLOUR	POLLED
89	550	1019	No Variants	ED/e	P/P

Lot 45 RAVENWORTH **Fully Loaded** 502K

CAN16662 Male 03-Jan-22 GDB 502K Pure Bred

CODIAK KOOL CHARLIE GNK 76B
PRAIRIE HILL LOADED UP 5E
PRAIRIE HILL CAPRICE 5C

STAR BANK 64R RIO 6W
RAVENWORTH ACADIA 5Y
STAR BANK SILKEN 83S

RIVER HILL 26T YAGER 99Y
A & W 013U
CODIAK SAILOR BOY GNK 20Y
MOOVIN ZPOTZ CAPRICE 32X

NOTTA ROMEO 64R
STAR BANK 99M
SPOTS 'N SPROUTS NEFROM 101N
STAR BANK 4P

BW	WT	YW	MYOSTATIN	COAT COLOUR	POLLED
84	700	1050	No Variants	ED/ED	P/P

From our embryo program here is a Prairie Hill Loaded Up son. This mating to our Ravenworth Acadia 5Y cow produced a very masculine bull with real length of spine and an interesting pedigree. Our Acadia cow family is known for its beautiful females and strong powerful bulls. As this is the only bull we have from that flush here is a very unique opportunity.



RAVENWORTH ACADIA 5Y - DAM



SPECKLE PARK - YEARLING BULLS



RAVENWORTH
CATTLE

Lot 46

We were very excited with the purchase of Back Country Dobro 6G from his overall style and structure to his pedigree being half from Ravenworth, being able to walk this bull on a portion of herd was fantastic. Archer 312K has a mild temperament like his mother. Solid topline with good spring of rib and hip shape, this attractive made bull has lots to offer. His dam is a Ravenworth Legendary 101D daughter from our Spots n' Sprouts 31A cow who has been a part of our flush program over the years.



BACK COUNTRY DOBRO 6G - SIRE

Lot **46** **RAVENWORTH Archer 312K** CAN16771 Male 30-Jan-22 GDB 312K Pure Bred

SPOTS 'N SPROUTS DOBRO 108D
BACK COUNTRY DOBRO 6G
RAVENWORTH LIGHTNING LADY 6Z

RAVENWORTH LEGENDARY 101D
RAVENWORTH ASPEN 502H
SPOTS 'N SPROUTS 31A

UNEEDA ZAPPER 13Z
SHER SPECS WINTER 26Z
SPOTS 'N SPROUTS STANDS ALONE
NOTTA 68L LIGHTNING LADY 9X

RIVER HILL 12X ZAAR 7Z
STAR BANK SILKEN 83S
SPOTS 'N SPROUTS WAMPUM 102W
SPOTS 'N SPROUTS 12S

BW	ADJ 205D	ADJ 365D	MYOSTATIN	COAT COLOUR	POLLED
75	655	1013	No Variants	ED/ED	P/P

Lot **47** **RAVENWORTH Marquis 324K** CAN16774 Male 16-Feb-22 GDB 324K Pure Bred

SPOTS 'N SPROUTS DOBRO 108D
BACK COUNTRY DOBRO 6G
RAVENWORTH LIGHTNING LADY 6Z

SPOTS 'N SPROUTS CHOREBOY 109C
RAVENWORTH NORTHERN STAR 120F
RAVENWORTH NORTHERN STAR 117B

UNEEDA ZAPPER 13Z
SHER SPECS WINTER 26Z
SPOTS 'N SPROUTS STANDS ALONE
NOTTA 68L LIGHTNING LADY 9X

UNEEDA Yael 06Y
SPOTS 'N SPROUTS 17Z
RIVER HILL 12X ZAAR 7Z
STAR BANK URANIA 85U

BW	ADJ 205D	ADJ 365D	MYOSTATIN	COAT COLOUR	POLLED
105	590	1001	No Variants	ED/ED	P/P



RAVENWORTH
CATTLE

Lot 47

Here is attractive long fronted bull with a good flank and a wide base. The grand dam of this bull on the maternal side is one of the largest framed cows in our herd. You cannot miss this bull when he stands in a pen full of bulls, he has the X factor for eye appeal. Masculine and balanced, free moving and attractive all the traits for a future herd sire.



RAVENWORTH NORTHERN STAR 120F - DAM

SPECKLE PARK - YEARLING BULLS

"Great big hip." If I gave you three words to describe this bull that is what would come out. This bull offers hip shape, width and balance as well as great scrotal for a young bull. Here is one who will make a difference in your program going forward. The dam Ravenworth Prairie Lily 132C has been in our donor program and is a female everyone picks out in our herd and the grand dam was also in our donor program, Ravenworth Prairie Lily 9Y. Valerio is definitely a contender in the bull pen for top spot.



RAVENWORTH PRAIRIE LILY 132C - DAM



Lot **48**

RAVENWORTH Valerio 330K

CAN15348 Male 09-Mar-22 GDB 330K Pure Bred

SPOTS 'N SPROUTS DOBRO 108D
BACK COUNTRY DOBRO 6G
RAVENWORTH LIGHTNING LADY 6Z

RIVER HILL 12X ZAAR 7Z
RAVENWORTH PRAIRIE LILY 132C
RAVENWORTH PRAIRIE LILY 9Y

UNEEDA ZAPPER 13Z
SHER SPECS WINTER 26Z
SPOTS 'N SPROUTS STANDS ALONE
NOTTA 68L LIGHTNING LADY 9X

CODIAK FIDDLER GNK 12X
RIVER HILL 12U X-ULTRA 07X
STAR BANK 64R RIO 6W
STAR BANK TWINKLE 51T

BW	ADJ 205D	ADJ 365D	MYOSTATIN	COAT COLOUR	POLLED
88	547	888	No Variants	ED/ED	P/P

Lot **49**

RAVENWORTH Caspian 332K

CAN16773 Male 19-Mar-22 GDB 332K Pure Bred

SPOTS 'N SPROUTS DOBRO 108D
BACK COUNTRY DOBRO 6G
RAVENWORTH LIGHTNING LADY 6Z

RIVER HILL 12X ZAAR 7Z
RAVENWORTH AURORA 110B
RAVENWORTH AURORA 4X

UNEEDA ZAPPER 13Z
SHER SPECS WINTER 26Z
SPOTS 'N SPROUTS STANDS ALONE
NOTTA 68L LIGHTNING LADY 9X

CODIAK FIDDLER GNK 12X
RIVER HILL 12U X-ULTRA 07X
NOTTA ROMEO 64R
STAR BANK 66N

BW	ADJ 205D	ADJ 365D	MYOSTATIN	COAT COLOUR	POLLED
81	579	1017	No Variants	ED/ED	P/P

Here is a dam in our herd who was a frame score bigger and huge middled with tonnes of muscle shape. Her calves are always picked out on pasture by visitors and family alike. Bred to the Back Country Dobro bull, we were very excited to see the outcome of this mating and we were not disappointed. 332K has a great front end.



RAVENWORTH AURORA 110B - DAM



SPECKLE PARK - YEARLING BULLS



This past fall we showed a pair and the heifer calf on the pair was sired by our walking bull Wolf Lake Free Trade 42F. After the pairs amazing show results this fall, two time champions and Miss world, the heifer calf Ravenworth Willow 304K went on to sell at the Agribition sale to Prestige Equities for \$30,000. Now, here is her half brother from the same sire but out of the Prairie Lily cow family. This first calver did an amazing job on the yearling bull, just as our first calving show pair with her heifer, and the MGS is Ravenworth Invictus 103C. Freewheel 314K is a wide topped, bid middled and great muscle shape.



WOLF LAKE FREE TRADE 42F - SIRE

50 RAVENWORTH **Freewheel** 314K

CAN16770 Male 04-Feb-22 GDB 314K Pure Bred

JSF TRADE SECRET 11A
WOLF LAKE FREE TRADE 42F
CODIAK NORA GNK 75Z

RAVENWORTH LEGENDARY 101D
RAVENWORTH PRAIRIE LILY 305H
RAVENWORTH PRAIRIE LILY 109E

YOGI GOES REDNECK 7Y
MONNERY RIVER 7W
CODIAK PYUTE GNK 25X
CODIAK WENDY GNK 23W

RIVER HILL 12X ZAAR 7Z
STAR BANK SILKEN 83S
RAVENWORTH INVICTUS 103C
STAR BANK TARAZED 46T

BW	ADJ 205D	ADJ 365D	MYOSTATIN	COAT COLOUR	POLLED
88	580	1023	No Variants	ED/ED	P/P

Lot 51 RAVENWORTH **Freestyle** 326K

CAN15347 Male 27-Feb-22 GDB 326K Pure Bred

JSF TRADE SECRET 11A
WOLF LAKE FREE TRADE 42F
CODIAK NORA GNK 75Z

RAVENWORTH INVICTUS 103C
RAVENWORTH LIGHTNING LADY 114E
STAR BANK SEQUIN 84S

YOGI GOES REDNECK 7Y
MONNERY RIVER 7W
CODIAK PYUTE GNK 25X
CODIAK WENDY GNK 23W

RAVENWORTH KLEOS 3Y
RAVENWORTH NORTHERN STAR 101A
STAR BANK 58L
LIGHTNING LADY 19C

BW	ADJ 205D	ADJ 365D	MYOSTATIN	COAT COLOUR	POLLED
83	669	1067	No Variants	ED/ED	P/P



We are only offering two bulls this year from our Wolf Lake Free Trade 42F sire and this one is equally special. The dam is an Invictus daughter, just as our show cow, but from the Lightning Lady cow family. Here is a chance at a combination of genetics that has proven itself. Ravenworth Lightning Lady 114E is also the Granddam of lot 41. There is definitely longevity in her line as her dam was just culled last fall and was an "S". Freestyle 326K has a strong top line and masculine front end.



RAVENWORTH LIGHTNING LADY 114E - DAM

SPECKLE PARK - FEMALES



Lot 52 RAVENWORTH **Lightning Lady** 320K

CAN15328 Female 12-Feb-22 GDB 320K Pure Bred

JSF TRADE SECRET 11A
WOLF LAKE FREE TRADE 42F
CODIAK NORA GNK 75Z

RAVENWORTH INVICTUS 103C
RAVENWORTH LIGHTNING LADY 319H
SPOTS 'N SPROUTS 7T

YOGI GOES REDNECK 7Y
MONNERY RIVER 7W
CODIAK PYUTE GNK 25X
CODIAK WENDY GNK 23W

RAVENWORTH KLEOS 3Y
RAVENWORTH NORTHERN STAR 101A
CODIAK NORSEMAN RKW 38N
STYALS MOONLIGHT LADY 4M

BW	ADJ 205D	ADJ 365D	MYOSTATIN	COAT COLOUR	POLLED
55	478	648	No Variants	ED/ED	H/P

Lot 53 RAVENWORTH **Northern Star** 337K

CAN15336 Female 06-Apr-22 GDB 337K Pure Bred

WRANGLER MR PERFECT 8D
RIVER HILL HI-TYDE 065H
RIVER HILL 99W YSABEL 65Y

SPOTS 'N SPROUTS STANDS ALONE
RAVENWORTH NORTHERN STAR 101A
STAR BANK NIGHTGLOW 46N

MOOVIN ZPOTZ AVENGER 28A
ANGEL OF P.A.R. 8Z
RIVER HILL 03M WILD CARD 99W
PRAIRIE HILL 65M

STYALS LIGHTNING LADD 14P
SPOTS 'N SPROUTS 2R
PRAIRIE HILL KICKBACK 2K
JANETTE OF P.A.R. 44H

BW	ADJ 205D	MYOSTATIN	COAT COLOUR	POLLED
90	541	No Variants	ED/ED	P/P



WOLF LAKE FREE TRADE 42F - SIRE



RAVENWORTH WILLOW 304K CWA 2022 SALE
PATERNAL SIB

Here is a true opportunity. This heifer is off our Wolf Lake Free Trade 42F walking bull. As he is no longer with us this will be one of the final females we will offer from this bull. They are half sibs to our Ravenworth Willow 304K heifer calf at side of our show pair, 304K sold for \$30,000 at the CWA sale. This heifer has great eye appeal and style with her super attractive front end, big middle and fantastic color.

Here is a true breeders opportunity, a daughter from Ravenworth Northern Star 101A dam of Invictus. Much of the base width and muscle shape in the Invictus line can be attributed back to this Stands Alone daughter. With style, eye appeal and genetics to back her up this female is full of potential. Sired by River Hill Hy-Tyde this is a pedigree to raise eyebrows.



RAVENWORTH NORTHERN STAR 101A - DAM



RIVER HILL HY-TYDE 065H - SIRE

SPECKLE PARK - FEMALES



Prairie Lily 9Y has produced some of our top selling females and we actually get contacted asking when we are selling some of her daughters again. This cow is 12 years old is still producing in our herd with excellent feet, udder and overall condition. She actually entered our flush program this past year for these exact reasons. Take note of 350K's birthdate, and then take note of her performance. The mating with the Hy-Tyde bull produced a female with early growth and style.



RAVENWORTH PRAIRIE LILY 9Y - DAM

Lot 54 RAVENWORTH **Prairie Lily** 350K

CAN15341 Female 19-Jun-22 GDB 350K Pure Bred

WRANGLER MR PERFECT 8D
RIVER HILL HI-TYDE 065H
RIVER HILL 99W YSABEL 65Y

STAR BANK 64R RIO 6W
RAVENWORTH PRAIRIE LILY 9Y
STAR BANK TWINKLE 51T

MOOVIN ZPOTZ AVENGER 28A
ANGEL OF P.A.R. 8Z
RIVER HILL 03M WILD CARD 99W
PRAIRIE HILL 65M

NOTTA ROMEO 64R
STAR BANK 99M
SPOTS 'N SPROUTS NEFROM 101N
STAR BANK 2H

BW	ADJ 205D	MYOSTATIN	COAT COLOUR	POLLED
83	620	No Variants	ED/ED	P/P

Lot 55 RAVENWORTH **River** 336K

CAN15335 Female 01-Apr-22 GDB 336K Pure Bred

WRANGLER MR PERFECT 8D
RIVER HILL HI-TYDE 065H
RIVER HILL 99W YSABEL 65Y

RIVER HILL SKIPPER 6S
SPOTS 'N SPROUTS 9Z
TWIN RIVER 4R

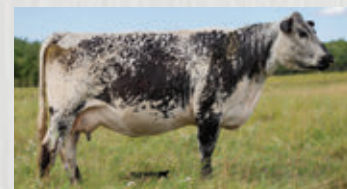
MOOVIN ZPOTZ AVENGER 28A
ANGEL OF P.A.R. 8Z
RIVER HILL 03M WILD CARD 99W
PRAIRIE HILL 65M

P.A.R. MOO FASSA 03M
CODIAK 06H
HWY.4 SPECKLE PARK 20K
ASPEN ACRES E.T. II 4E

BW	ADJ 205D	MYOSTATIN	COAT COLOUR	POLLED
86	577	No Variants	ED/ED	P/P



Here is a wide based female from our River cow line. Her dam has a good udder and feet and is still producing in our herd. She is one of the Spots n' Sprouts females that has been in our herd since she was a heifer calf.



SPOTS 'N SPROUTS 9Z - DAM

SPECKLE PARK - FEMALES

We have only sold a few females from our Aspen cow family, one was a bred heifer to Wolf Lake Speckle Park who was in calf with Wolf Lake Bob. The dam of this heifer is a strong, well built cow that is long spined paired with our Back Country Dobro bull this mating was spot on. Aspen 349K offers style, performance and femininity.



BACK COUNTRY DOBRO 6G - SIRE



SPOTS 'N SPROUTS 31A - DAM



Lot **56**

RAVENWORTH Aspen 349K

CAN15340 Female 06-Jun-22 GDB 349K Pure Bred

SPOTS 'N SPROUTS DOBRO 108D
BACK COUNTRY DOBRO 6G
RAVENWORTH LIGHTNING LADY 6Z

SPOTS 'N SPROUTS WAMPUM 102W
SPOTS 'N SPROUTS 31A
SPOTS 'N SPROUTS 12S

BW	ADJ 205D	MYOSTATIN	COAT COLOUR	POLLED
80	538	No Variants	ED/ED	P/P

UNEEDA ZAPPER 13Z
SHER SPECS WINTER 26Z
SPOTS 'N SPROUTS STANDS ALONE
NOTTA 68L LIGHTNING LADY 9X

CODIAK NORSEMAN RKW 38N
SPOTS 'N SPROUTS 2S
CODIAK NORSEMAN RKW 38N
SPOTS 'N SPROUTS 5N

Lot **57**

RAVENWORTH Northern Star 333K

CAN15334 Female 22-Mar-22 GDB 333K Pure Bred

SPOTS 'N SPROUTS DOBRO 108D
BACK COUNTRY DOBRO 6G
RAVENWORTH LIGHTNING LADY 6Z

RAVENWORTH LEGENDARY 101D
RAVENWORTH NORTHERN STAR 129G
RAVENWORTH NORTHERN STAR 120E

BW	ADJ 205D	ADJ 365D	MYOSTATIN	COAT COLOUR	POLLED
85	595	753	No Variants	ED/ED	P/P

UNEEDA ZAPPER 13Z
SHER SPECS WINTER 26Z
SPOTS 'N SPROUTS STANDS ALONE
NOTTA 68L LIGHTNING LADY 9X

RIVER HILL 12X ZAAZ 7Z
STAR BANK SILKEN 83S
RAVENWORTH KLEOS 3Y
RAVENWORTH NORTHERN STAR 101A

Huge middled, great lines and a very angular front end, what we are all searching for. The maternal side of the pedigree on this heifer is from our top bloodlines matched with the Dobro bull produced something very special. The grandam of this heifer is a full sib to Invictus and the dam is sired by Ravenworth Legendary 101D.



RAVENWORTH NORTHERN STAR 120E - GRANDAM



RAVENWORTH CATTLE

SPECKLE PARK - FLUSH



2022 MISS WORLD SPECKLE PARK

Lot 58

Lot 58 RIGHT TO FLUSH

RAVENWORTH Willow 510H

CAN11413 Female 11-Jan-20 GDB 510H Pure Bred

RAVENWORTH KLEOS 3Y
RAVENWORTH INVICTUS 103C
RAVENWORTH NORTHERN STAR 101A

STAR BANK 64R RIO 6W
STAR BANK TUCANA 38T
SPOTS 'N SPROUTS STANDS ALONE
STAR BANK NIGHTGLOW 46N

STAR BANK 58L
NOTTA 26T JANETTE 3W
NOTTA 2R PRETENDER 4T

SPOTS 'N SPROUTS JUNO 103J
STAR BANK 68G
P.A.R. RILEY 2R
NOTTA PRETENDER 64P

BW	Myostatin	Coat Colour	Polled
85	No Variants	ED/ED	P/P

Here is a world wide opportunity for the breed. "Share the good ones" - our goal at Ravenworth is to always sell some of our best in order to get their genetics out working in the world. 510H calved Willow 304K last year on Jan 14, 2022 we then flushed her once and bred her back and she calved on Jan 17, 2023. Here is your chance to pair our Champion cow with any bull of your choosing to make something unique and great for your herd. Ravenworth Willow 510H has many banners and titles, as did her mother Notta 26T Janette 3W, this is a line of Champion females.

2022 Miss World - Speckle Park and Top 8 of all breeds - Champion of the World Competition

2022 Grand Champion Female Agribition
2022 Grand Champion Female Farm Fair
2022 Champion Senior female Manitoba Ag EX
2021 First Lady Classic Breed Champion Agribition

Dam of High selling heifer calf at 2022 Agribition sale Ravenworth Willow 304K \$30,000
Half sib to Ravenworth Kraken 505J

Terms: Selling one flush to sire of your choice - semen and all other expenses to be paid by purchaser of flush, guaranteeing 5 embryos no top end



RAVENWORTH WILLOW 510H - MANITOBA AG EX



RAVENWORTH WILLOW 510H - EDMONTON FARM FAIR

SPECKLE PARK - EMBRYOS



BW	Myostatin	Coat Colour	Polled
70	No Variants	ED/ED	P/P

Ravenworth Willow I34E

REG# CAN7367PB

Lot 59A Field Ready X Willow I34E

3 EMBRYOS

RIVER HILL 26T YAGER 99Y
WOLF LAKE FIELD READY 52F
NOTTA PHO-FINISH 54P

RAVENWORTH INVICTUS 103C
RAVENWORTH WILLOW I34E
NOTTA 26T JANETTE 3W

RIVER HILL TRAFFIC JAM 26T
PRAIRIE HILL HEARTBREAKER 99L
STAR BANK LACERTA 68L
STAR BANK LEONID NIGHT 54L

RAVENWORTH KLEOS 3Y
RAVENWORTH NORTHERN STAR 101A
STAR BANK 58L
NOTTA 2R PRETENDER 4T

OR

Lot 59B Assassin 777G X Willow I34E

3 EMBRYOS

STAR BANK KING GEORGE 82U
INC ASSASSIN 777G
CODIAK GYPSY RAIN GNK 63B

RAVENWORTH INVICTUS 103C
RAVENWORTH WILLOW I34E
NOTTA 26T JANETTE 3W

SPOTS 'N SPROUTS NEFROM 101N
STAR BANK 11H
CODIAK OSCAR GNK 8S
CODIAK SHELLY GNK 11X

RAVENWORTH KLEOS 3Y
RAVENWORTH NORTHERN STAR 101A
STAR BANK 58L
NOTTA 2R PRETENDER 4T

Ravenworth Willow I34E is a **full sib** to Ravenworth Willow 510H, our Miss World Champion Female. Here is a chance to get in on the first embryos we flushed to this successful sire from Wolf Lake or select the embryos mated to Assassin 777G. INC Assassin 777G is the sire of Lots 40 and 41.

IVF Embryos stored at Bow Valley genetics, Alberta. Buyer to incur any shipping costs

Qualified for Canada, USA, AUSTRALIA



Thank you

TO THE MOMENTUM 2022 BUYERS & BIDDERS

we are grateful

NRCS



Ravenworth Invictus 103C
CAN5324

BW	Myostatin	Coat Colour	Polled
54	No Variants	ED/ED	P/P



SPOTS 'N SPROUTS 31A - DAM
JKH 31A | CAN4299PT

BW	Myostatin	Coat Colour	Polled
70	1,NT821	ED/ED	P/P

Lot 59C Invictus X Spots 'N Sprouts 31A

3 EMBRYOS

RAVENWORTH KLEOS 3Y
RAVENWORTH INVICTUS 103C
RAVENWORTH NORTHERN STAR 101A

SPOTS 'N SPROUTS WAMPUM 102W
SPOTS 'N SPROUTS 31A
SPOTS 'N SPROUTS 12S

STAR BANK 64R RIO 6W
STAR BANK TUCANA 38T
SPOTS 'N SPROUTS STANDS ALONE
STAR BANK NIGHTGLOW 46N

CODIAK NORSEMAN RKW 38N
SPOTS 'N SPROUTS 2S
CODIAK NORSEMAN RKW 38N
SPOTS 'N SPROUTS 5N

Here is another proven match, we have calves on the ground from this mating. 31A has been a very productive cow in our herd.

Conventional embryos stored at Bow Valley Genetics, AB. Buyer to incur shipping costs. Qualified for Canada, USA, Australia.



RAVENWORTH LIGHTNING LADY 120C - DAM
GDB 120C | CAN5623PB

BW	Myostatin	Coat Colour	Polled
60	No Variants	ED/ED	P/P

Lot 59D Invictus X Lightning Lady 120C

3 EMBRYOS

RAVENWORTH KLEOS 3Y
RAVENWORTH INVICTUS 103C
RAVENWORTH NORTHERN STAR 101A

RAVENWORTH NAVIGATOR 15Z
RAVENWORTH LIGHTNING LADY 120C
SIX STAR LIGHTNING LADY 22W

STAR BANK 64R RIO 6W
STAR BANK TUCANA 38T
SPOTS 'N SPROUTS STANDS ALONE
STAR BANK NIGHTGLOW 46N

A & W 15R
STAR BANK URANIA 85U
NOTTA ROMEO 64R
STAR BANK 7P

Here is a proven mating that hits the mark. Ravenworth Stetson 112G and Ravenworth Lightning Lady 105E, Ravenworth Lightning Lady 126F. (105E and 126F both have sons in this sale).

IVF Embryos stored at Bow Valley genetics, Alberta. Buyer to incur any shipping costs. Qualified for Canada, USA, Australia



GDB 105E - FULL SIB LOT 59D



GDB 126F - FULL SIB LOT 59D



GDB 112G - FULL SIB LOT 59D

RELEASING THE KRAKEN

KBVKEH

If you were out and about at the shows this fall and saw him in person, you will know when we say this bull has base width and muscle shape exactly what we mean. Ravenworth Kraken 505J is sired by Ravenworth Invictus 103C, Kraken is a frame score bigger and shows a tick more muscle shape than his sire, this comes from his dam, one of the biggest middled cows in our herd. Kraken is a stop you in your tracks kind of bull, we love his phenotype, his style, his structure and his overall eye appeal. He is an easy moving bull with good hoof structure. The hip shape and lower third on this bull is phenomenal. For a bull with this much muscle mass and shape it is impressive how fluid he is in his movement and still carries the desired calving ease front end. Kraken is a half sib to our Miss World cow. Consistency, predictability, and proven genetics are bred into this bull. Kraken's full sister was Reserve Champion female as a heifer calf in 2019 Stockade Round Up. Here is the opportunity to RELEASE THE KRAKEN on your herd.

Consigned by: Ravenworth Cattle and Wolf Lake Speckle Park



EDMONTON FARM FAIR GRAND CHAMPION BULL



LLOYDMINSTER STOCKADE ROUND UP GRAND CHAMPION BULL

BW	ADJ 205D	ADJ 365D	FEB 24, 2023	Myostatin	Coat Colour	Polled
80	644 LBS	1020 LBS	1950 LBS	No Variants	ED/ED	P/P

Lot **60 A,B,C,D**

SEMEN - SELLING 4 PACKAGES OF 5 STRAWS EACH

RAVENWORTH Kraken 505J

CAN13149 Male 5-Jan-21 GDB 505J Pure Bred

RAVENWORTH KLEOS 3Y
RAVENWORTH INVICTUS 103C
RAVENWORTH NORTHERN STAR 101A

STAR BANK 64R RIO 6W
STAR BANK TUCANA 38T
SPOTS 'N SPROUTS STANDS ALONE
STAR BANK NIGHTGLOW 46N

RIVER HILL 12X ZAAR 7Z
RAVENWORTH PRAIRIE LILY 122B
STAR BANK 1S

CODIAK FIDDLER GNK 12X
RIVER HILL 12U X-ULTRA 07X
SPOTS 'N SPROUTS NEFROM 101N
STAR BANK 9E

SPECKLE PARK - SEMEN RAVENWORTH CATTLE

A FEW OF HIS PROGENY



GDB 505J



GDB 510H



GDB 112G



GET OF SIRE CHAMPION

BW	Myostatin	Coat Colour	Polled
54	No Variants	ED/ED	P/P

Lot **61 A,B,C,D,E,F,G**

SEMEN - SELLING 7 PACKAGES OF 5 STRAWS EACH

RAVENWORTH Invictus 103C

CAN5324 Male 20-Jan-15 GDB 103C Pure Bred

STAR BANK 64R RIO 6W
RAVENWORTH KLEOS 3Y
STAR BANK TUCANA 38T

NOTTA ROMEO 64R
STAR BANK 99M
SPOTS 'N SPROUTS NEFROM 101N
STAR BANK 68G

SPOTS 'N SPROUTS STANDS ALONE
RAVENWORTH NORTHERN STAR 101A
STAR BANK NIGHTGLOW 46N

STYALS LIGHTNING LADD 14P
SPOTS 'N SPROUTS 2R
PRAIRIE HILL KICKBACK 2K
JANETTE OF P.A.R. 44H

We have always admired this bull and have many great milking productive daughters and grand daughters in our herd. Invictus has been a great breeding tool in our herd giving us calving ease, great performance and good feet and udders. Many of Invictus progeny have been selected as Champions, Reserve Champions, Division Champions, Group Class Champions and our high sellers over the years. With this year one of his daughters being 2022 Miss World Speckle Park. We attribute this to the consistency in his calves. Invictus adds huge eye appeal and muscle shape to his calves.

Stored at Bow Valley Genetics, Alberta. Buyer is responsible for all shipping costs. Qualified for Canada, USA, Australia.

SPECKLE PARK - FLUSH PICK-IT LIVESTOCK

LA
PICK-IT LIVESTOCK
LAYNE PICKETT
BOX 242, CHIPMAN, AB T0B 0W0
LAYNE: 587-989-7995



Codiak Cookie GNK 19A

Lot **62**

RIGHT TO FLUSH
CODIAK COOKIE GNK 19A

RIVER HILL HU 5L
CLEAR VIEW TY 205R
CODIAK KIBITZ RKW 12K

CODIAK MR. BLACK RKW 13M
CODIAK COUGAR GNK 54R
LIGHTNING LADY 4B

CODIAK PISTOL RKW 02J
CODIAK PRAIRIE FIRE RKW 05J
PRAIRIE HILL AFTER SHOCK 75G
POLAR 1Z

HWY. 4 SPECKLE PARK 2H
PRAIRIE HILL REBA 154F
DOUBLE RR RASCAL 183'88
DOUBLE RR ANGEL 185'88

BW	MYOSTATIN	COAT COLOUR	POLLED
83	No Variants	ED/ED	P/P

19A is a cow I really think highly of, as she is out of the great 54R cow of Codiak's. As she was a fairly well known cow out of one of the top cow herds in the breed. 54R is the dam to many donors in the Codiak herd as well as the dam to Codiak Caption which has been a main herd sire at Riverhill. This cow has made friends in the show ring and in our herd. I'm using a bull in my herd this year, as I also have a heifer that in my mind is one of the best I've raised. This cow has one of the best udders I've seen in the breed. Top it off with a great set of feet under her. Then look at that pedigree to top it off with. Clear View Ty, who's that? You may ask. Ever heard of Owe My Gosh that's his sire to. Which makes them 3/4 sibs.

Guaranteed 5 eggs at buyers cost. Willing to offer semen in our inventory as well. Max of 13 eggs, the rest split or option to buy out.



COLGAN'S KAUAI 43K - DAUGHTER

TERMS & CONDITIONS

TERMS:

The terms of the sale are cash or cheque, payable at par at the sale location. The right of property shall not pass until after settlement has been made; no invoicing on buyers in attendance unless previous arrangements have been made. Every animal sells to the highest bidder and in cases of disputes, the auctioneer's decision will be final. Announcements from the auction block will take precedence over the printed matter in the catalogue. Current exchange rates will be announced sale day. All monies are in Canadian funds.

CERTIFICATE OF REGISTRATIONS:

Each purebred animal will carry papers issued by the Canadian Speckle Park Association and Canadian Angus Association. A certificate of registry duly transferred will be furnished to the buyer for each animal after payment has been made.

HEALTH:

All animals in the sale have met all necessary health requirements.

GUARANTEE:

All sellers and buyers of Speckle Park and Angus cattle in this sale are expected to be knowledgeable of and to abide by the Guidelines for Seller and Buyer Expectations and the By-laws of the Canadian Speckle Park Association and Canadian Angus Association. These documents are available from the Association offices.

PREGNANCY INFORMATION:

All serviceable age females have been pregnancy examined by an accredited veterinarian, giving an estimated length of gestation. This estimated gestation period shall be used only as a guideline to calving and is not a guarantee of actual service.

LIABILITIES:

All persons attend the sale at their own risk. The seller, facility owner and sale manager assume no liability legal or otherwise, for any accidents that occur. It is understood that T Bar C Cattle Co. (2013) Ltd. is acting only as a medium between buyer and seller and is not responsible for any failure on the part of either party to live up to his obligations. Neither does T Bar C Cattle Co. (2013) Ltd. assume any financial obligations to collect or enforce collection of any monies between parties and any legal action that may in exceptional cases be taken must be between the buyer and the seller. T Bar C Cattle Co. (2013) Ltd. assumes no responsibility for any credit extended by the seller to the buyer. The buyer must look to the seller for fulfillment of all guarantees and representations made hereunder.

DELIVERY:

Every assistance will be given in getting your purchases home. Each animal becomes the risk of the purchaser as soon as sold.

PHONE, MAIL, WIRE BIDS:

Bidders unable to attend the sale may phone, wire or mail their bids and instructions to the sale manager, auctioneer or special representatives. Bids must be received in sufficient time prior to the sale.

INSURANCE:

We strongly recommend that insurance is purchased for full value.

ERRORS:

All announcements at sale time, written or oral, supersede any written material in the catalogue.



710 Hamilton Ave, PO Box 4659
Melfort, SK S0E 1A0
Toll Free: 844-752-PETS (7387)
Text/Call: 306-752-7387

www.gatewayvet.ca
theteam@gatewayvet.ca



@GatewayVetServices
@gatewayvetmelfort
@GatewayVetSrv
@GatewayVetServices



For farming life.™

Masterfeeds®
an **Altech®** company

HUMBOLDT: 1-800-747-9186 | REGINA: 1-306-790-5576
SASKATOON: 1-306-384-2144 | SWIFT CURRENT: 1-306-773-3001



PHONE 1.587.887.1934 ext 1
CELL 403-362-1933
FAX 1.587.317.7392



BOWVALLEYGENETICS.COM
THEARCSERVICES.COM

ROB STABLES
GENERAL MANAGER & FOUNDING PARTNER
RSTABLES@BOWVALLEYGENETICS.COM BOX 240, ROSEMARY, AB T0J 2W0

Davis-Rairdan Embryo Transplants Ltd.
Davis-Rairdan International
P.O. Box 590
Crossfield, Alberta
Canada T0M 0S0
Phone (403) 946-4551
Fax (403) 946-5093
e-mail embryos@davis-rairdan.com



SERVICES OFFERED:
On-Farm embryo freezing and collection
Donor care facility
Recipient herd
Licensed facility for embryo exports
Genetic marketing & Selection
International Embryo Sales

www.davis-rairdan.com

THANK YOU

TO OUR SPONSOR

Norheim Ranching

NORHEIM *NOR* RANCHING

Your Livestock Equipment Specialists



SASKATOON - LLOYDMINSTER - MOOSE JAW

306.955.1350

NORHEIMRANCHING.COM

RETURN UNDELIVERABLE
CANADIAN ADDRESSES TO:

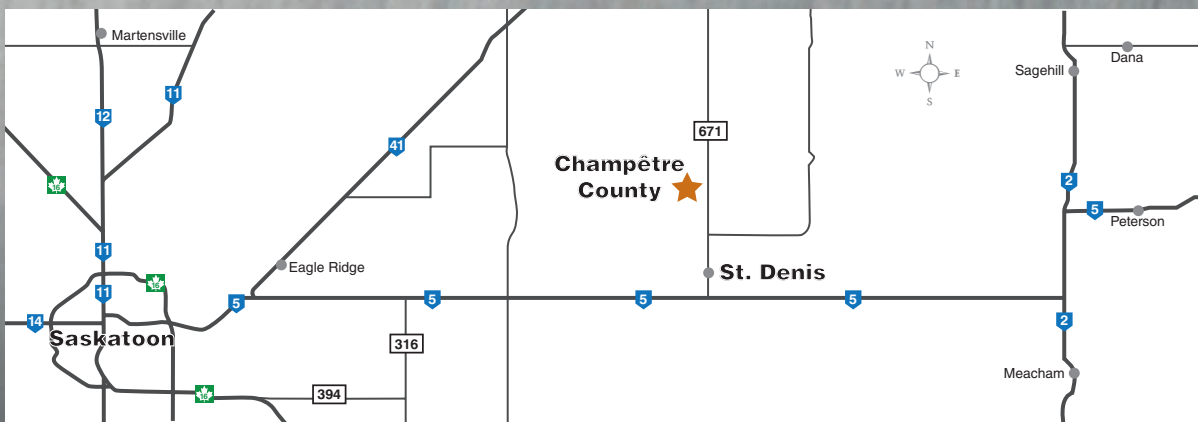
T BAR C CATTLE CO. LTD.
BOX 2330
WARMAN, SK S0K 4S0



MOMENTUM

Speckle Park & Angus Bull & Female Sale

SUNDAY, APRIL 2, 2023 AT 1:00 PM • CHAMPÊTRE COUNTY, ST. DENIS, SK



Located 35 km East of Saskatoon on Highway #5, turn North at Highway 671 towards St. Denis. Travel 6.5 km North and 0.8 km West.

CREATED BY:
*Today's
Publishing*